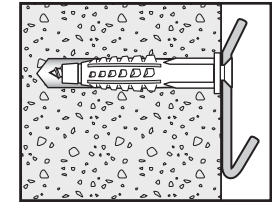
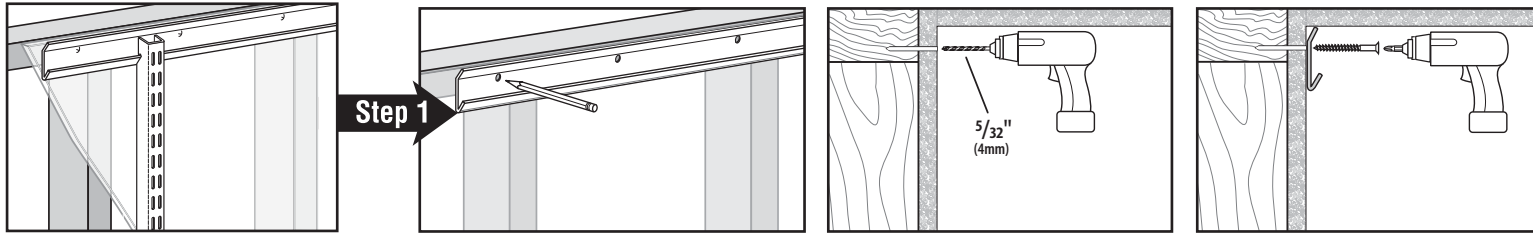


Installing freedomRail Rail

Install into top sill plate (Recommendation)

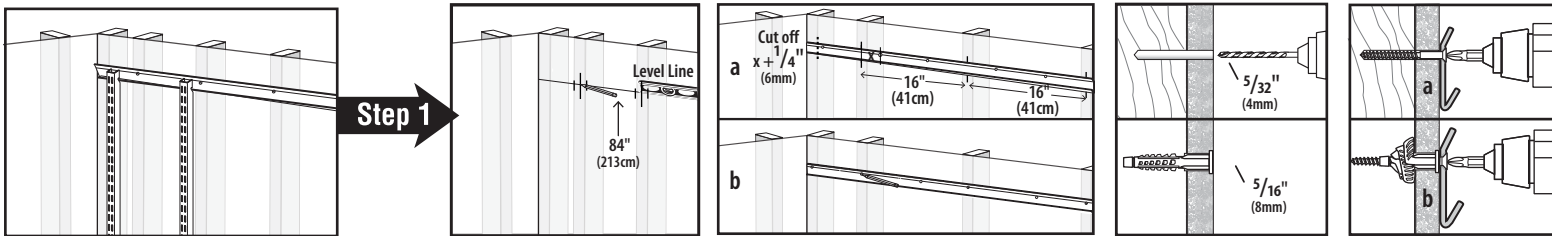
Strong-Loc™ Screw $\frac{5}{32}$ " Drill bit



Masonry. Use anchors enclosed. Follow recommended installation instructions except drill the hole for the anchor with a $\frac{5}{16}$ " masonry drill bit.

Install into studs (Alternate recommended)

Strong-Loc™ Anchor Strong-Loc™ Screw $\frac{5}{32}$ " Drill bit (for Screw) $\frac{5}{16}$ " Drill bit (for Anchor)



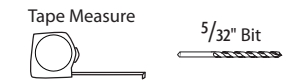
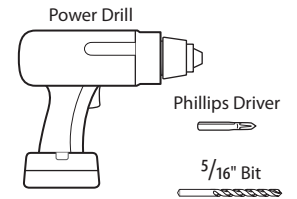
Draw level line at 84" and mark stud location.

(a) Trim the rail so that the holes in the rail line up with the studs that are spaced 16" on center. (Every other hole in rail should line up with a stud) (b) Hold rail in place and mark every hole.

Drill pilot holes. Use $\frac{5}{32}$ " drill bit into studs and a $\frac{5}{16}$ " drill bit into drywall for anchors. Tap anchors into $\frac{5}{16}$ " holes.

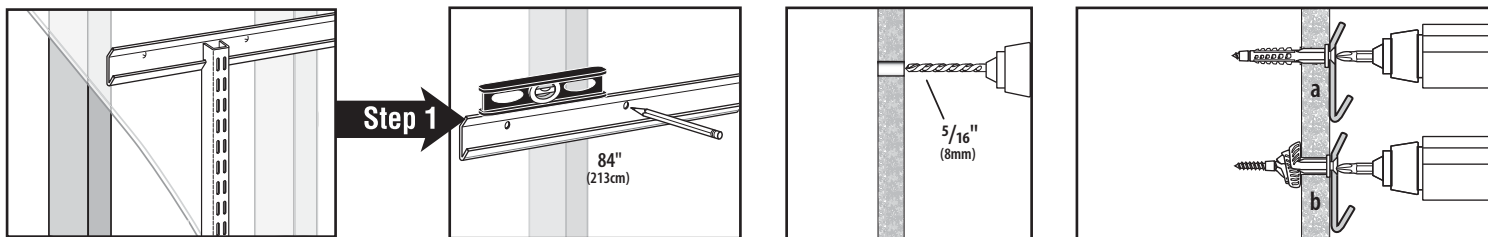
(a) Install screws into studs. (b) For anchors run screw in flush, then give power drill a burst or two to pull up anchor (Screw cannot overtighten).

Tools Required :



Install into drywall, plaster

Strong-Loc™ Anchor Strong-Loc™ Screw $\frac{5}{16}$ " Drill bit



Drill hole at every pencil mark (every 8"). Insert anchor. If you hit a stud drill with $\frac{5}{32}$ " bit and use screw alone.

(a) Position Rail. Run in screw until flush. (b) Then give power drill a burst or two to pull up anchor (Screw cannot overtighten).