



raumplus

**raumplus**\_ High quality German engineered systems, available in 58 countries worldwide. Equally suited for commercial or residential projects.

**raumplus North America**\_ Fabrication in Vancouver, British Columbia, allows shorter lead times compared to similar European systems.

**Quality**\_ Made in Germany guarantees high quality, superior fit and finishes. Innovative concealed hardware offers a modern, streamlined aesthetic. All hardware is warranted for 10 years.

**Flexibility**\_ **raumplus** sliding systems allow maximum flexibility of space. Simple, easily installed room dividers with the beauty of Japanese Shoji screens. Elegant office and conference room sliding doors. Space efficient, luminous patient room doors.

**Possibility**\_ 5 different systems, 8 door profiles, 26 standard panel materials, unlimited powder coat colors, multiple track options, fully assembled or frame kits. Possibilities really are unlimited.

**Design Solutions**\_ Systems for single- and multi-family residential to hospitality, work place, and healthcare projects. Solutions range from simple by-pass room dividers, to single wall-mounted doors, and building length runs of fixed panels.

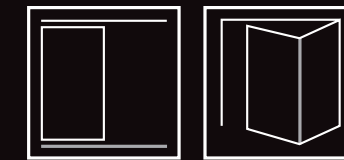
**Purchasing**\_ Available as **Made-to-Measure** assembled doors or frame-kits, hardware only for local **Fabrication**, or **Quick-Ship** when time is limited.

**Value**\_ **raumplus** North America is an owner-managed business. We guarantee the highest standards of customer service and extensive product knowledge. We are able to assist with design solutions that best fit desires, preferences and budget. We are happy to provide quotes, construction–document–level drawings, pricing, contractor coordination, and order management.



**raumplus**

# S34 System



S150 Sliding Door



S720 Sliding Door



S300 Sliding Door



S300 Bi-Fold Door



S34 Solid Door Hardware



Bi-Fold Detail



S34 Detail

**S34 Bottom Rolling System**\_ Well suited for residential or multi-family projects. Use as closet doors or room dividers. 4 aluminum frame stiles, and 26 standard panel options. Option to integrate tracks seamlessly into the floor surface.

The new **S150** profile is a scant ½" thick — possibly the thinnest profile available anywhere.

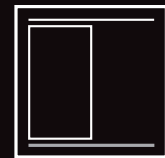
**S34 Solid Door Hardware**\_ Allows the use of **raumplus** quality hardware for customer's own doors.

**S34 Bi-Fold System**\_ This new system offers unparalleled access — no floor track and doors that fold out of the way.

- S150/S720 maximum size 4' x 9' / 130lbs
- S300 maximum size 5' x 10' / 360lbs
- S300 Bi-Fold maximum size 5' x 9' / 130lbs
- Available as Made-to-Measure assembled doors, Made-to-Measure frame-kits, QuickShip, Bulk or Fabrication

**raumplus**

# S42 System



S1500 Sliding Door



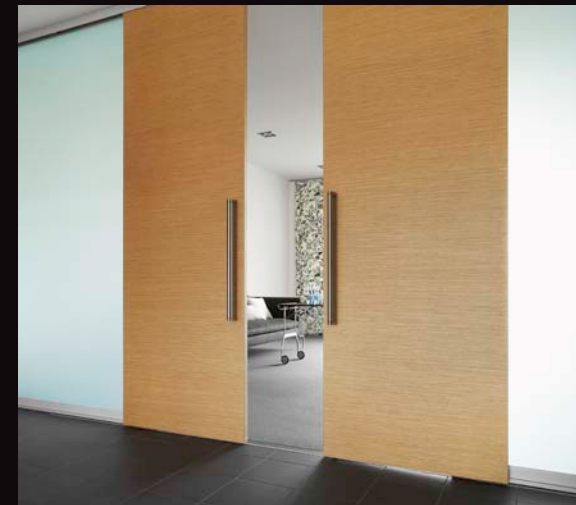
S3000 Sliding Door



S1600 Fixed and Sliding Door



C42 Sliding Door



S42 Solid Door Hardware



S42 Detail

**S42 Bottom Rolling System**\_ Ideal for high-use commercial and residential projects. 3 aluminum frame stiles, 26 panel options, keyed locks, ADA handles and unlimited powder coat choices. Tracks integrate seamlessly into the floor surface.

**S1600 Fixed Panel System**\_ A minimal frame allows for an open expression of space, even when divided. Framed panels make for quick and easy installation.

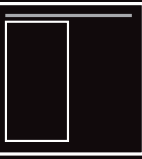
**C42**\_ An innovative approach to a traditional wood framed sliding door. The integrated aluminum structure adds strength and modern elegance.

**S42 Solid Door Hardware**\_ Allows the use of **raumplus** superior quality hardware for customer built doors.

- S1500/S1600/S3000 maximum size 6' x 10' / 360lbs
- C42 maximum size 4' x 8' / 360lbs
- Available as Made-to-Measure assembled doors, Made-to-Measure frame-kits, Bulk or Fabrication

**raumplus**

# AIR System



S1500 AIR Sliding Door



S3000 AIR Sliding Door



S1500 Square AIR Sliding Door



C42 AIR Sliding Door



AIR Solid Door Hardware



AIR ADA Handle Detail

**AIR System**\_ Perfect solution when a floor track is not an option — ideal for healthcare. Available as wall- or ceiling mounted. 3 aluminum frame stiles, 26 panel options, keyed locks, ADA handles and unlimited powder coat choices.

**C42 AIR**\_ An innovative approach to a traditional wood framed sliding door, top-hung.

**AIR Solid Door Hardware**\_ Allows the use of **raumplus'** superior quality hardware for customer built doors.

- S1500AIR/S3000Air maximum size 4' x 9' / 130lbs
- C42 AIR maximum 4' x 8' / 130lbs
- Available as Made-to-Measure assembled doors, Made-to-Measure frame-kits, Bulk or Fabrication

# SWING Door



# Options



SWING Door Slim



SWING Door Standard Jamb



SWING Detail



**raumplus Swing**\_ Fulfills the need for a modern hinge door without the long European lead-time. We build **Swing** here in North America. Choose between a minimal 7/8" jamb and an installation-friendly clamshell jamb. Usual superior finish and panel choices.

- Maximum size 3' 3" x 8'
- Available as Made-to-Measure assembled doors, Made-to-Measure frame-kits, Bulk or Fabrication

# Quality



**raumplus** sliding, fixed, bi-fold and hinged doors — made-to-measure in North America.  
Quality for every budget.

**raumplus** North America 866 580 0112  
Sales Office / USA 866 580 0112  
Sales Office / New York 212 947 0404  
Sales Offices / CANADA 866 999 3949

[www.raumplusna.com](http://www.raumplusna.com)

Contact us for a dealer near you.  
Printed on environmentally responsible paper with vegetable based ink

**raumplus**